

113066000-00580630



fitted with

- work equipment**
- connected load**
- power consumption**
- luminous flux**
- luminous efficacy**
- light distribution**
- light colour**
- color rendering index (CRI)**
- system of protection**
- class of protection**
- technology**
- usage**
- luminaire body**
- lamp cover**
- weight (net)**
- mains supply**

- design**
- fastening**
- dimension**
- special features**

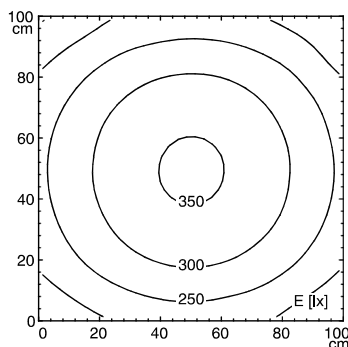
- LED
- Energy efficiency category A+
- electronic ballast
- 100/120/220-240 V; 50/60 Hz
- approx. 9,5 W
- approx. 750 lm
- approx. 79 lm/W
- direct
- neutral white, approx. 5000 K
- > 80
- IP 67
- I
- switchable
- external
- aluminium, anodised, aluminium coloured anodised
- screen, clear
- approx. 2.1 kg
- built-in plug
- US-ConnectionStandard
- mounted version
- L-angle, clamp
- A=565 mm
- through-wired, Eco equipment



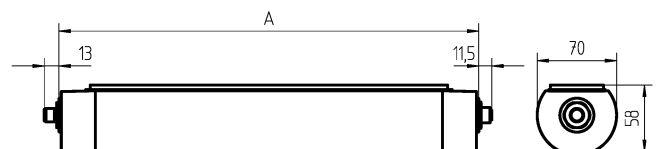
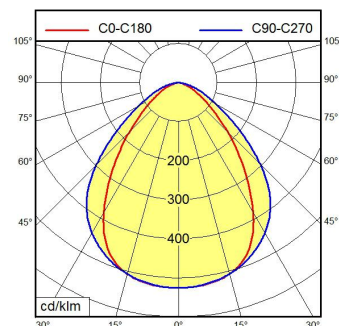
Serie 814

illuminance

distance: 100 cm
Em: 273 lx
Emax: 354 lx
Emin: 169 lx



luminous intensity



Errors and technical changes excepted. Images can vary from original.
 Photometric and electrical data may vary due to component tolerances.